



PLAINFIELD PUBLIC SCHOOLS

ARP ESSER Community Forum

12/9/21

Introductions



Paul M. Brenton
Superintendent of Schools



Scott Sugarman
Asst. Superintendent of
Schools



Rena Cadro
Director of Curriculum,
Instruction, and Grants

Mission of Plainfield Public Schools

To prepare all students to lead safe and healthy lives with the skills to become productive members of the community & the workforce

Plainfield Public Schools BOE Goals

The Board of Education (BOE) has adopted a mission and six core strategies to improve our schools:

- Ensuring all students meet rigorous standards;
- Ensuring the highest quality staff;
- Improving personalization and response to diversity;
- Increasing parental and community engagement;
- Promoting safe, healthy and effective learning environments; and,
- Optimizing resources to promote student achievement.



Utilizing our resources to maximize student
learning at a challenging time

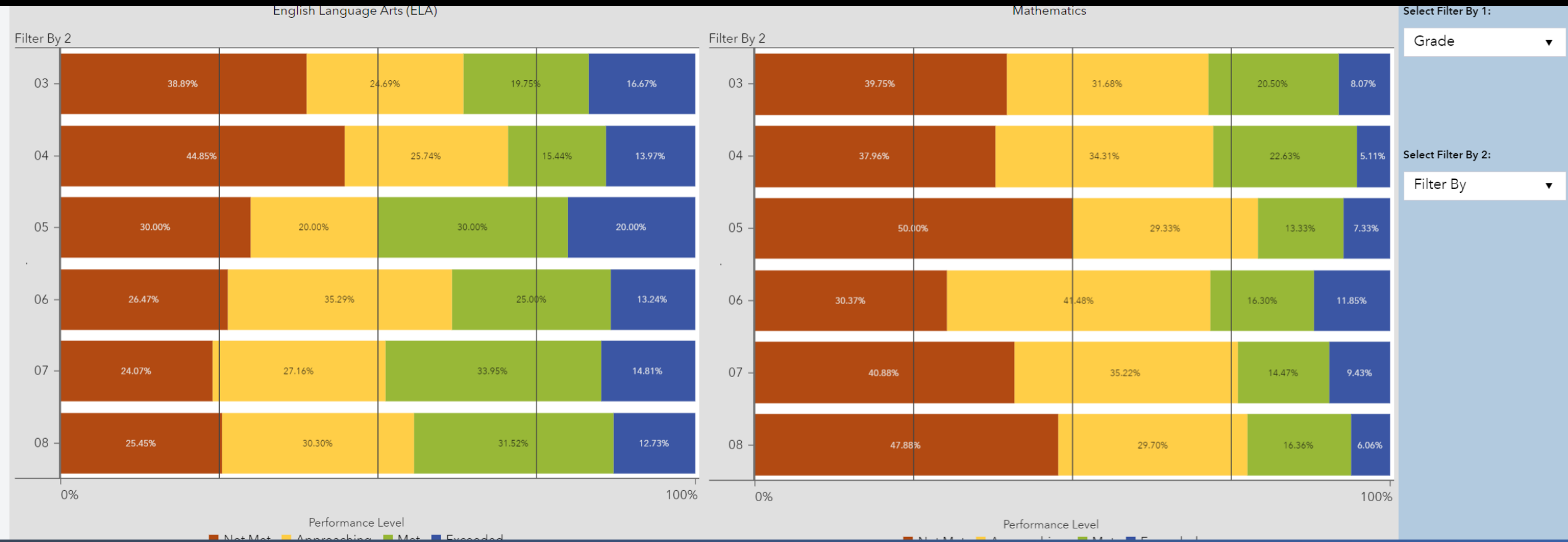
Understanding the landscape of 2021-2022

Keeping Schools open



Student Achievement During COVID /Remote learning

2021



Providing Academic Support

2021



Providing Mental Health Support



Commitment to the development of engaging academic programming

2021

PLAINFIELD CODES

Coding & Computer Science @ Plainfield Public Schools

Computer Science is Changing Everything!

Coding and creative computing have become core skills in nearly every career field. In the 21st century, real empowerment begins when students grow from mere *users* of technology to *creators* of their own technology. This is #CSforALL—and no previous coding experience is required! Click the thumbnails below to learn more...

Commitment to Student Activities

2021



Celebrating Student Success



Commitment to Parent Engagement



Plainfield Public Schools



SUPERINTENDENT'S COFFEE HOUSE

Plainfield Central Middle School

TUESDAY Oct 12th

6:00pm

In the PCMS library and on zoom



Commitment to the Community



Abbreviations and Programs

CRF: The Coronavirus Relief Fund, (Expired June 2021)

ESSER I: The Elementary and Secondary School Emergency Relief Fund (ESSER) established in the Coronavirus Aid, Relief, and Economic Security Act (CARES Act)

ESSER II: The additional funding for ESSER provided in the Coronavirus Response and Relief Supplemental Appropriations Act, 2021 (CRRSAA).

ARP ESSER: Funding for ESSER provided under the American Rescue Plan (ARP).

ESSER II Special Education Recovery Act: The additional funding for ESSER provided in the Coronavirus Response and Relief Supplemental Appropriations Act, 2021 for high needs students (CRRSAA).

Allowable ESSER Activities

All expenditures with ESSER dollars must be COVID- related and for the purpose of preventing, preparing, and responding to the pandemic.

The United States Education Department (USED) provided a list of categories where districts may spend ESSER I, II, and III funding. In order to claim reimbursement, districts must ensure the expense is COVID-related and falls into one of the allowable categories.

Allowable Uses of ESSER Funding

- ☐ Coordinate emergency response
- ☐ Ensure preparedness and coordination
- ☐ Purchase cleaning supplies
- ☐ Educational technology
- ☐ Mental health supports
- ☐ Supplemental learning
- ☐ Added needs of at-risk population
- ☐ Transportation
- ☐ Coordinate long-term closures
- ☐ Professional development
- ☐ High quality instructional materials and curricula
- ☐ Acquisition of modular classrooms or space
- ☐ ESSA (New federal law replacing NCLB)
- ☐ IDEA (Special Education)
- ☐ Perkins (Career & Technical Education)
- ☐ McKinney-Vento Homeless Assistance Act
- ☐ Adult Education and Family Literacy Act
- ☐ Address learning loss
- ☐ Improving air quality
- ☐ Implement public health protocols
- ☐ Additional/Adjusted pay
- ☐ COVID related renovation

Learning Loss Requirement

An LEA must reserve no less than 20% of its total ARP ESSER III allocation to address learning loss through the implementation of evidence-based interventions.

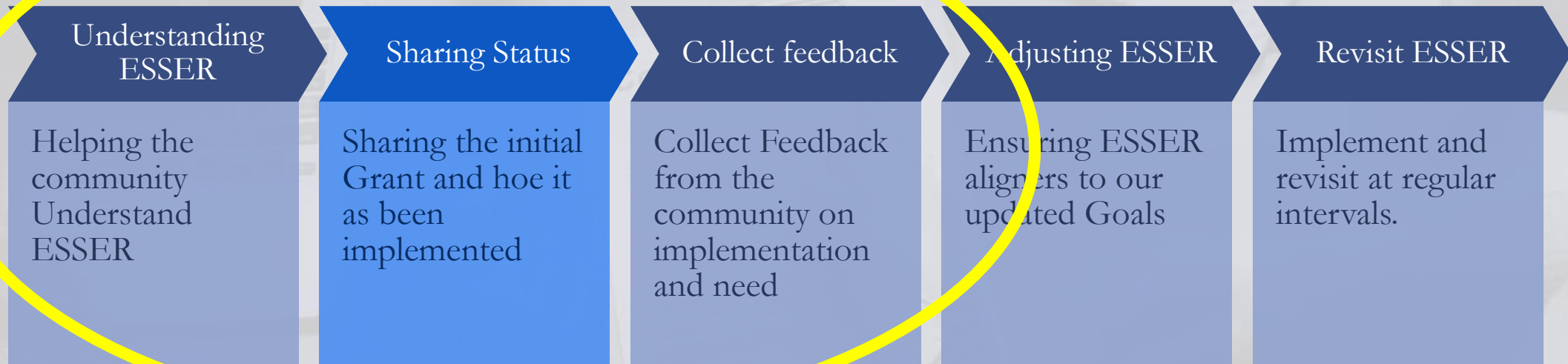
Learning Loss Requirement, Cont.

- ☐ Offer or extend summer school programming
- ☐ Offer or extend before or after school programming
- ☐ Intensive one-to-one or small group tutoring
- ☐ Expand Advanced Placement (AP) and dual credit for students
- ☐ Expand CTE offerings for students
- ☐ MTSS supports
- ☐ Additional counseling time
- ☐ Expand Title I direct services
- ☐ Provide prep courses for ACT/College Algebra or other areas of need
- ☐ Contract for tutoring services
- ☐ Behavioral health supports and interventions
- ☐ Hire additional staff to work with at-risk students
- ☐ Conduct a four-week prestart of school camp
- ☐ Offer an intense week-long acceleration for students
- ☐ Pay for additional CDE courses for students
- ☐ Pay for students to take online reading and math courses

Wraparound Support Services

- Support wraparound support services:
 - Hiring support personnel in schools, such as;
 - nurses,
 - school counselors,
 - social workers,
 - individuals trained in violence intervention and trauma-informed care,
 - individuals trained in responding to substance use disorder
- Implementing or expanding arts programs, or sports programs and initiating clubs
- Providing community-based mental health and substance use disorder programs to students and their families
- Providing meals for students

Goals for our ARP ESSER community forum this evening



HEALTH & SAFETY STRATEGIES

1. Wearing Masks
2. Physical Distancing
3. Handwashing/Respiratory Practices
4. Temp Checks & Nurse Screening Support
5. Ventilation & Sanitation Improvements
6. Contact Tracing/Quarantine/Cohorting
7. Vaccinations as Determined Safe

SOCIAL/EMOTIONAL/LEARNING SUPPORT

1. Profess. Development of S/E/L Practices
2. Increased S/E/L Support Services
3. Social Re-Integration Activities
4. S/E/L Embedded in Curriculum
5. Wrap Around Services/Agency Partners
6. Family Support Specialist Services
7. Co-Curricular/Athletics Enrichment Oport.

PARENT ENGAGEMENT & SUPPORT

1. Website Access to Reopen Plan
2. Regular 6-month Plan Reviews
3. Parent/Family Support Services
4. Family Meals & Internet Support
5. School-Based Monitoring Teams
6. BOE – Public Re-Opening Response



RESPONSE TO STUDENT LEARNING NEEDS

1. Summer Enrichment & Recovery
2. Start-Up Student Progress Assessment
3. Technology/Internet–Equitable Access
4. Address Disproportionate Student-Impact
5. Review IEP Services For COVID impact.
6. Extended School Day Support for Students

STAFF PROFESSIONAL DEVELOPMENT

1. Researched-Based Practices S/E/L T & L
2. TEVAL Goals to Address Learning Recovery
3. Innovative Technology Applications T&L
4. Quarantine Instructional Response Practices
5. Investigate Options to Address Absenteeism
6. School Data Teams to Measure Interventions

CURRICULUM & INSTRUCTION SUPPORT

1. Curriculum Accommodations for Recovery
2. Grade/Content Area Accommodations
3. Scaffolded Interim Formative Assessments
4. Return to A/B Block Schedule at PHS
5. S/E/L Embedded Curriculum Lesson Plans
8. Grade Retention and Grouping Alternatives

Health & Safety Strategies

The array of health and safety strategies address CDC/State guidelines for ensuring a safe return to daily-direct-instruction as well as preventative efforts for safe learning.

- Face Masks
- Handwashing and Respiratory Practices
- Temp Checks and Nurse Screening Support
- Contact Tracing-Quarantining-Cohorting
The above strategies can be achieved with limited new expenses
- Social Distancing
Social distancing requires that classrooms have limited enrollment to ensure 3'-4' spacing. This requires additional teachers/para-educators to lower class size. The anticipated increases are 5 teachers and 15 para-educators for supervision. These staff also address recovery, SEL & acceleration support.
- Ventilation and Sanitation Improvements
Ventilation will be improved by annual inspections and upgrades as needed. Sanitation efforts include providing bottle filling stations and UV cleaners. Remaining costs for strategies are included in the annual budget.
- Vaccination Support When Eligible

$\$30,000 \times 3\text{yrs} =$
 $\$90,000$

4 teachers & 8 paras
Reduced each year to
assimilate costs to
budget

$\$60\text{K} = \underline{\$480,000}$

$\$20\text{K} = \underline{\$320,000}$

Inspections/Hepa
filters

Filling Stations/UV
clean

$\$75\text{K} + \$125\text{K} =$
 $\$200,000$

Overtime Staffing -
 $\$45\text{K}$

ESSER COSTS - 3 YEARS

Health and Safety Strategies

Social Emotional Learning (SEL) Strategies

Monitoring, supporting and developing student social and emotional well-being is an important part of ensuring student recovery and

- Increased SEL support – Guidance counselors, social workers PK-12
- Professional Development on SEL practices and programs
- Social Emotional Re-Integration Activities
- SEL Embedded in Tier One Curriculum
- Wrap Around Services-Working with Partnership Agencies
- Family Support Specialist Services – Re-engage students and families as needed
- Co-Curricular Enrichment Programming

ESSER COSTS - 3 YEARS

$2X\$60KX3\text{ yrs} = \underline{\$360,000}$

See below under PD
SEL activities embedded

In annual BOE budgets

$\$30K \times 3\text{yrs} = \underline{\$90,000}$

$\$20K \times 2X3\text{ yrs} = \underline{\$120,000}$

See Below - Curriculum

ESSER COSTS -
3 YEARS

Supporting Climate
and Social Emotional
Learning

Family Engagement & Support

The requirements for Family Engagement & Support are consistent with BOE practices and therefore are appropriate to annual budgetary expenses.

- Public Feedback and Transparency of Reopen and Continuity of Service Plan
- Regular Three-Month Plan Reviews
- Parent and Family Support Services
- Family Meals and Internet Support
- School-Based Monitoring Teams
- BOE-Public Reopening Response and Feedback
- Address Issues with SIS (Aspen)

ESSER COSTS - 3 YEARS

(Family engagement is a BOE Priority & is included in budget.)
Note: These costs are embedded in the annual budget or included in other ESSER strategies below/above.

ESSER COSTS - 3 YEARS

Family Engagement and Support

Student Learning

Plainfield BOE strategies to recover and accelerate student learning includes summer programs, instruction & curriculum modification based on student assessments and data on under-represented sub-groups to improve responsiveness ad differentiation.

- Summer Enrichment and Recovery
- Beginning of Year Student Diagnostic Assessments
- Technology and Internet Equitable Access
Ensuring students & staff have 1:1 access and internet access at home
- Address Disproportionate Student Impact
- Review IEP Services for COVID Impact
- Extended School Day Support for Students
- Increased Intervention Supports

ESSER COSTS - 3 YEARS

Summer programs with cost assimilation – 3 years
\$125K/\$75K/\$50K=
\$250,000

800 systems, devices and technical staff
\$447,746

Transportation & services - extended day support
\$195,000

ESSER COSTS -
3 YEARS

Student Learning

Staff Professional Development and Support for Evidenced-Based Interventions

- SEL Research-Based Practices, Professional Planning & Curriculum Improvements
- TEVAL Goals to Address Learning Recovery Based on Student Baseline Data
- Innovative Technology Applications supporting Teaching, Learning, Extended Day
- Quarantine Instructional Response - as necessary for remote learning
- Reengagement of disconnect and remote students-Address Absenteeism
- School Data Teams to Measure Intervention Response

Note: Costs for professional support with technology applications, video-conferencing, consultants for SEL and differentiated practices; portfolio management system

ESSER COSTS - 3 YEARS

The ARP-ESSERIII grant requires dedicating 20% of funds (\$649,436) to address learning recovery through curriculum and instruction improvements.

ESSER COSTS - 3 YEARS

**Professional
Development and
Support**

Curriculum & Instruction Modifications to Address Learning Loss Through Innovations

- Curriculum Advancement to Address Recovery – Extended Day, ESY, & Summer
- Grade/Content Area Accommodations Focused on Acceleration
- Scaffolded Interim Formative Assessments- Targeted Student Support
- SEL (Social Emotional Learning) Embedded Curriculum Lesson Plans
- Grade Retention and Scaffolded/Differentiated Groups, as needed

Note: Costs include curriculum enrichment support, formative assessments, truancy

Intervention, school-enhancement study team meetings, partner agencies, etc.

ESSER
COSTS - 3
YEARS

Mandated
set-aside:
20% of \$3.2
million =

\$649,436

ESSER COSTS -
3 YEARS

Curriculum and
Instruction

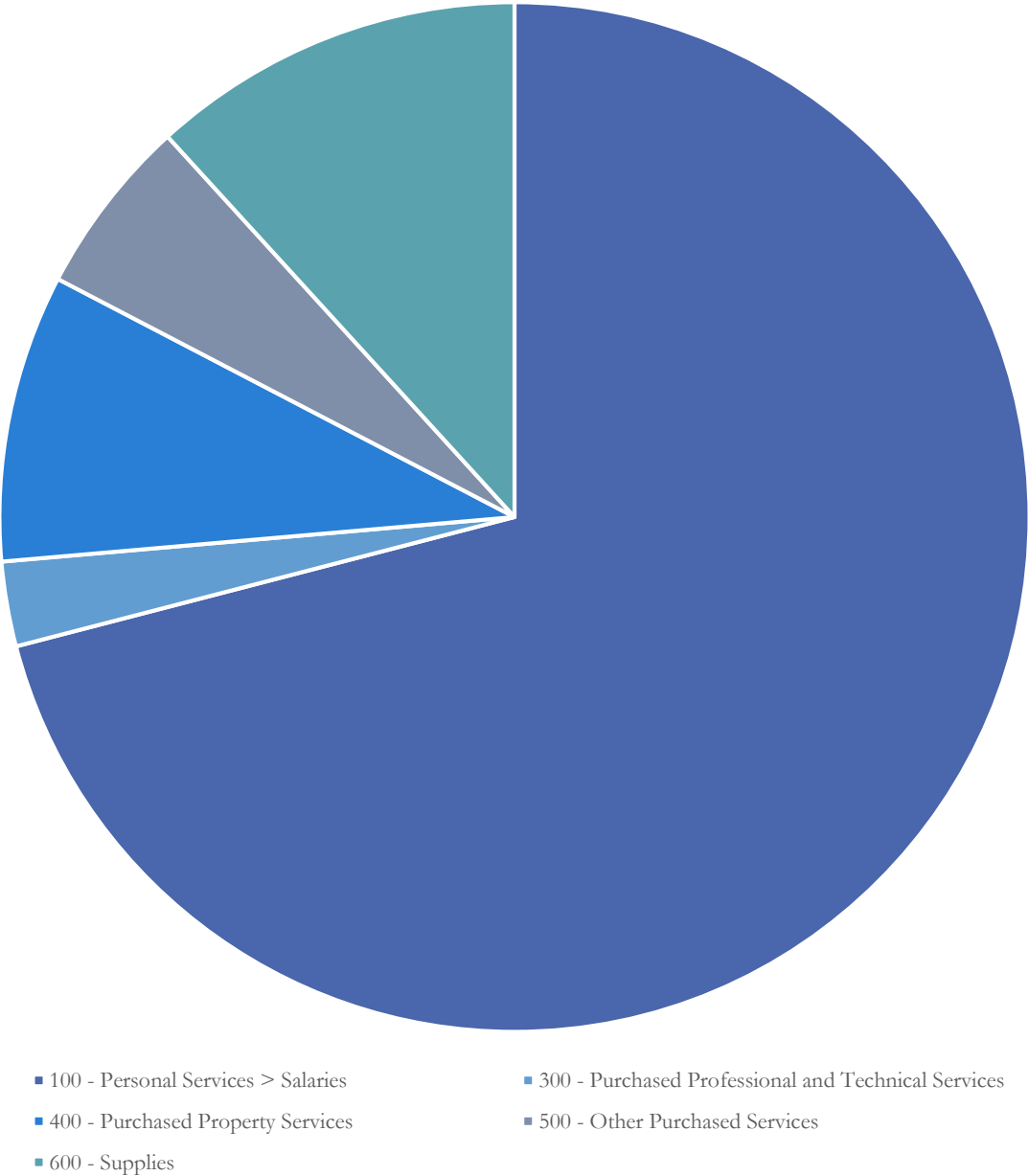


Budget Adjustment since June 2021

\$293,497.00

Set aside for HVAC
study, Repairs and air
Quality

APR ESSER Initial Budget June 2021



ESSER COSTS - 3 YEARS

| | |
|---|----------------|
| 100 - Personal Services > Salaries | \$2,305,710.00 |
| 200 - Other | \$1,000.00 |
| 300 - Purchased Professional and Technical Services | \$86,500.00 |
| 400 - Purchased Property Services | \$293,497.00 |
| 500 - Other Purchased Services | \$181,500.00 |
| 600 - Supplies | \$382,255.00 |
| | \$3,249,462.00 |



New Drivers Worth Considering

As we move into 2021-
2022,

Our evolving
environment has us
considering several new
Budget Drivers

Inability to fill anticipated support positions

- 2 Elementary Counselors
- 2 Literacy Interventionists
- 1 Social Worker
- 4 Tutors
- Substitutes



COVID Related Cost Increases

Utilities

| Category | Anticipated Increase/Decrease |
|------------------------|-------------------------------|
| Certified Salaries | \$ 444,469.00 |
| Non-certified Salaries | \$ 166,894.00 |
| Health Insurance | \$ (455,836.00) |
| Pension | \$ 100,000.00 |
| Electric | \$ 44,891.00 |
| Heat Energy | \$ 80,278.00 |
| Transportation | \$ 330,029.00 |
| Total | \$ 710,725.00 |

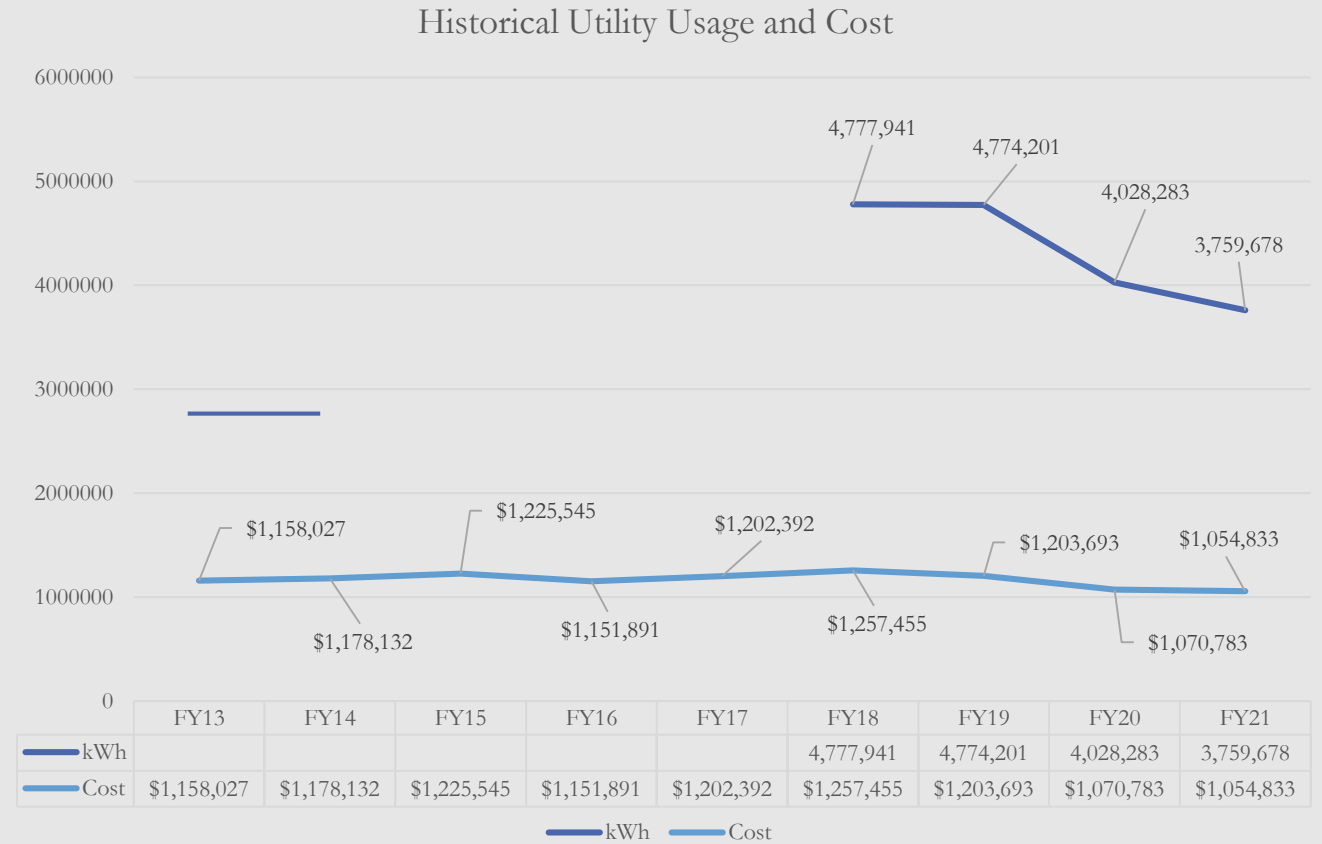
Anticipated (%) in electrical costs based on rates

Anticipated (%) in Heat Energy based on rates

Utilities (Cont.)

2021

| Year | kWh | Cost |
|------|-----------|--------------|
| FY13 | | \$ 1,158,027 |
| FY14 | | \$ 1,178,132 |
| FY15 | | \$ 1,225,545 |
| FY16 | | \$ 1,151,891 |
| FY17 | | \$ 1,202,392 |
| FY18 | 4,777,941 | \$ 1,257,455 |
| FY19 | 4,774,201 | \$ 1,203,693 |
| FY20 | 4,028,283 | \$ 1,070,783 |
| FY21 | 3,759,678 | \$ 1,054,833 |



Budget Driver Transportation

| Category | Anticipated Increase/Decrease |
|------------------------|-------------------------------|
| Certified Salaries | \$ 444,469.00 |
| Non-certified Salaries | \$ 166,894.00 |
| Health Insurance | \$ (455,836.00) |
| Pension | \$ 100,000.00 |
| Electric | \$ 44,891.00 |
| Heat Energy | \$ 80,278.00 |
| Transportation | \$ 330,029.00 |
| Total | \$ 710,725.00 |

Anticipated increase in transportation costs reflects the following costs:

- Eastconn Transportation
- Additional DATTCO rates
- Anticipated Summer programming costs

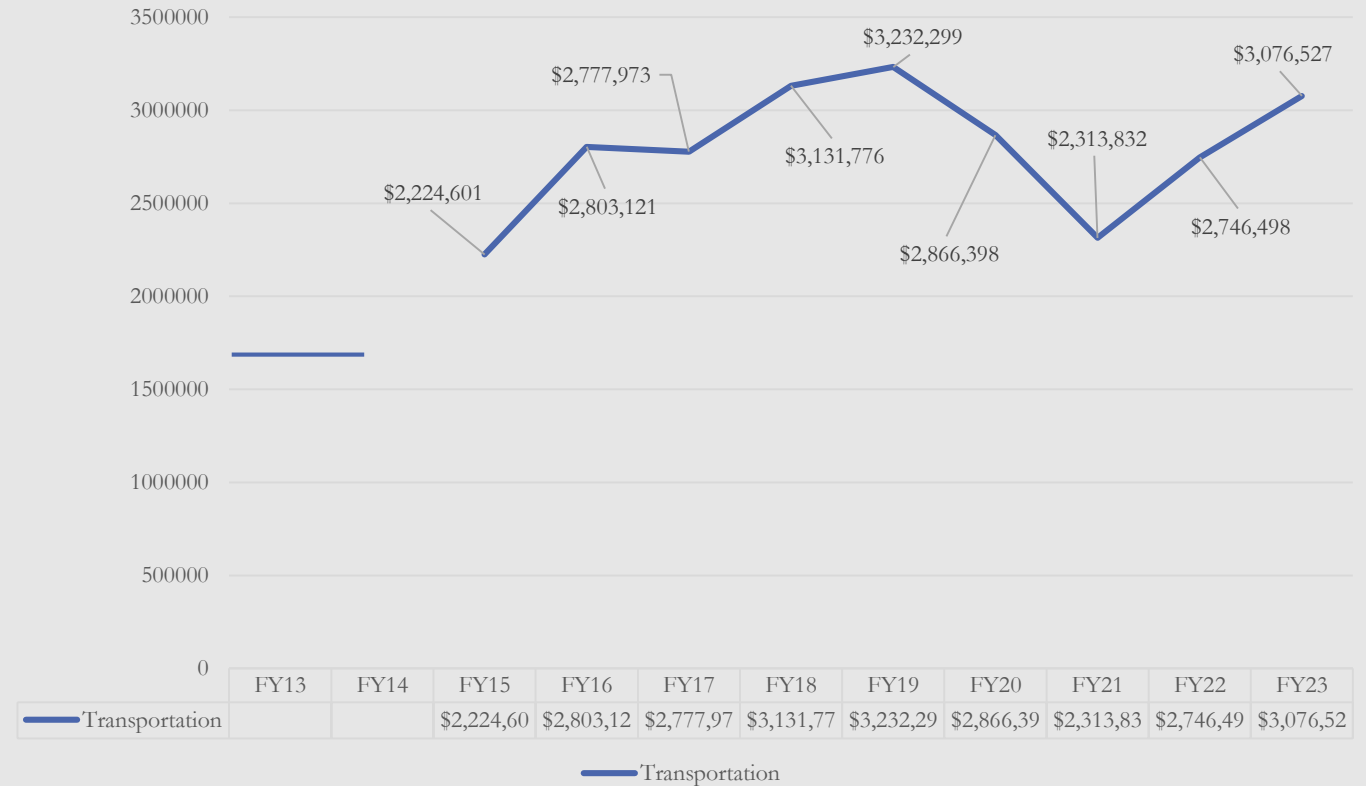
Note: Opportunity to reduce this number through ESSER Grants

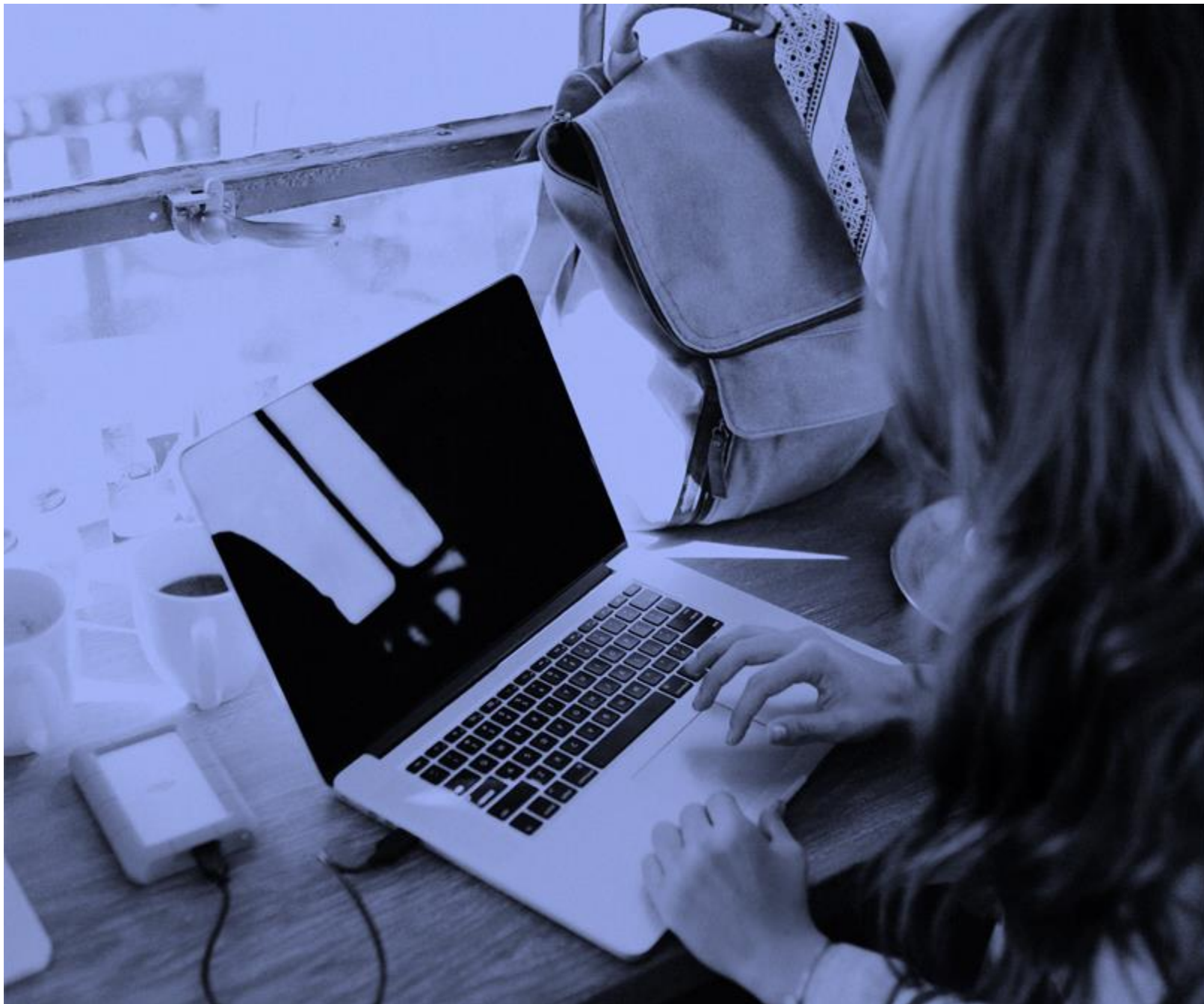
Transportation (Cont.)

2021

| Year | Transportation | |
|------|----------------|-------------------|
| FY13 | | District Operated |
| FY14 | | District Operated |
| FY15 | \$ 2,224,601 | |
| FY16 | \$ 2,803,121 | |
| FY17 | \$ 2,777,973 | |
| FY18 | \$ 3,131,776 | |
| FY19 | \$ 3,232,299 | |
| FY20 | \$ 2,866,398 | Covid |
| FY21 | \$ 2,313,832 | Covid |
| FY22 | \$ 2,746,498 | |
| FY23 | \$ 3,076,527 | |

Historical Transportation Cost





Requirement
for in-person
learning

Allowable Uses of ESSER Funding

- ☐ Coordinate emergency response
- ☐ Ensure preparedness and coordination
- ☐ Purchase cleaning supplies
- ☐ Educational technology
- ☐ Mental health supports
- ☐ Supplemental learning
- ☐ Added needs of at-risk population
- ☐ Transportation
- ☐ Coordinate long-term closures
- ☐ Professional development
- ☐ ESSA (New federal law replacing NCLB)
- ☐ IDEA (Special Education)
- ☐ Perkins (Career & Technical Education)
- ☐ McKinney-Vento Homeless Assistance Act
- ☐ Adult Education and Family Literacy Act
- ☐ Address learning loss
- ☐ Improving air quality
- ☐ Implement public health protocols
- ☐ Additional/Adjusted pay
- ☐ High quality instructional materials and curricula
- ☐ Acquisition of real property or modular classrooms
- ☐ COVID related renovations

HEALTH & SAFETY STRATEGIES

1. Wearing Masks
2. Physical Distancing
3. Handwashing/Respiratory Practices
4. Temp Checks & Nurse Screening Support
5. Ventilation & Sanitation Improvements
6. Contact Tracing/Quarantine/Cohorting
7. Vaccinations as Determined Safe

SOCIAL/EMOTIONAL/LEARNING SUPPORT

1. Profess. Development of S/E/L Practices
2. Increased S/E/L Support Services
3. Social Re-Integration Activities
4. S/E/L Embedded in Curriculum
5. Wrap Around Services/Agency Partners
6. Family Support Specialist Services
7. Co-Curricular/Athletics Enrichment Oport.

PARENT ENGAGEMENT & SUPPORT

1. Website Access to Reopen Plan
2. Regular 6-month Plan Reviews
3. Parent/Family Support Services
4. Family Meals & Internet Support
5. School-Based Monitoring Teams
6. BOE – Public Re-Opening Response



RESPONSE TO STUDENT LEARNING NEEDS

1. Summer Enrichment & Recovery
2. Start-Up Student Progress Assessment
3. Technology/Internet–Equitable Access
4. Address Disproportionate Student-Impact
5. Review IEP Services For COVID impact.
6. Extended School Day Support for Students

STAFF PROFESSIONAL DEVELOPMENT

1. Researched-Based Practices S/E/L T & L
2. TEVAL Goals to Address Learning Recovery
3. Innovative Technology Applications T&L
4. Quarantine Instructional Response Practices
5. Investigate Options to Address Absenteeism
6. School Data Teams to Measure Interventions

CURRICULUM & INSTRUCTION SUPPORT

1. Curriculum Accommodations for Recovery
2. Grade/Content Area Accommodations
3. Scaffolded Interim Formative Assessments
4. Return to A/B Block Schedule at PHS
5. S/E/L Embedded Curriculum Lesson Plans
8. Grade Retention and Grouping Alternatives

What Area of focus should we consider in the future?

School Meals

Should we plan to continue free school meals until 2024 after federal funding ends?

Student Health

How can we provide more health Supports in our schools?

Community Partnerships

How do we strengthen ties with community resources?

Closing the digital divide

Robust technology to support online learning

Other needs

What other COVID related needs would families like to see addressed?



PLAINFIELD SCHOOLS THANKS YOU!

Your Partnership is important to us